



# PHYSICAL SECURITY SOLUTIONS

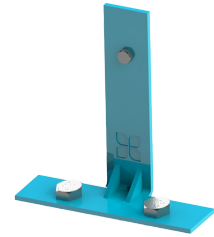
Products designed to bolt down and secure your  
ATMs, smart safes and kiosks.

— DESIGNED TO BE TOUGH, VISIBLE, AND EFFECTIVE.

# Anchors

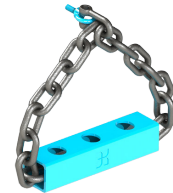
## Ram Guard Anchor

Our floor anchor system, the **Ram Guard Anchor**, bolts down your safe, ATM, or kiosks at risk of being pulled out during a raid.



## Shackle Anchor

Providing additional strength for larger devices, the **Shackle Anchor** system, sits perfectly alongside your device giving a visible deterrent.



## Pyramid Anchor

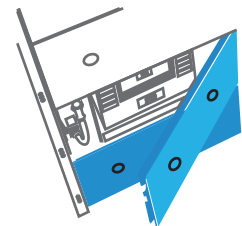
Our **Pyramid Anchor** is a floor system using the inherent physics of strength through the triangular shape providing the best protection.



## Safe door protection

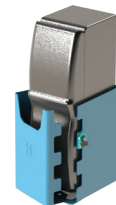
### Gryphon Door

An extra layer of security to protect the safe doors of your ATM, the **Gryphon Door** protection system is a robust barrier to a physical attack.



### Gryphon X Wrap

Our manufactured steel exoskeleton wrap, the **Gryphon X**, helps to ensure your ATMs remain locked down and doors covered.



## Additional physical protection

### Adjustable Plinth Base

An adjustable plinth is the perfect solution that not only provides the best height adjustments, can fit almost all makes of ATM, but also provides the best in defence against physical attack.



### ATM Barrier Gate

Our steel barrier prevents criminals from pulling out ATMs during a physical attack. Strong robust design can be customised to the brand of each customer.

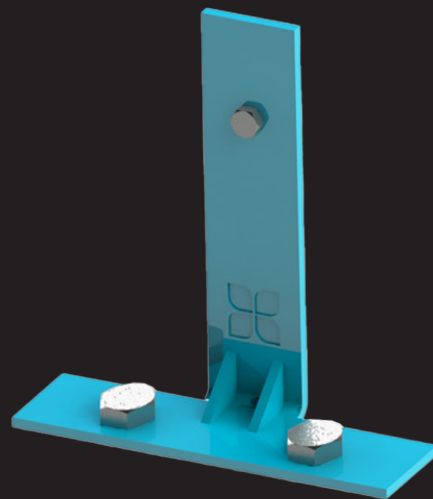




# Ram Guard Anchor

Bolt down, hold fast!

The **Ram Guard Anchor** is the perfect solution for securing devices against forceful attacks and pull-outs. Engineered with precision and crafted from steel, this simple yet remarkably effective anchor offers your devices steadfast protection in adverse conditions.



# Ram Guard Anchor

Bolt down, hold fast!

## KEY FEATURES

### Robust Construction:

Made from high-quality steel, the **Ram Guard Anchor** boasts exceptional durability and resilience, keeping your devices safe from unexpected and determined attacks.

### Eco-Friendly:

Our commitment to sustainability means that each Cennox **Ram Guard Anchor** is crafted using materials that can be recycled, contributing to a greener planet without compromising on strength and reliability.

### Re-usability:

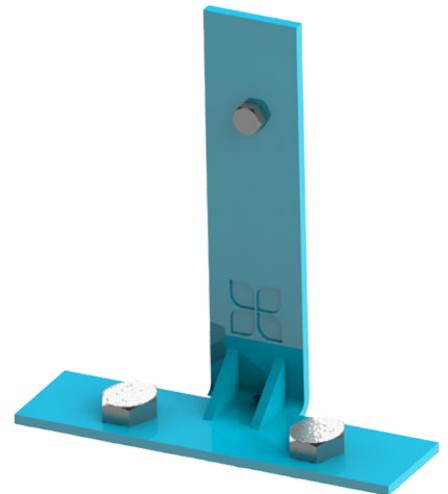
Designed with versatility in mind, the **Ram Guard** can be easily reused. Whether you're replacing, moving, or upgrading your devices, this anchor remains a dependable security component throughout its life-cycle.

### Efficiency in Installation:

Simplicity meets efficiency with a design that ensures quick and straightforward installation, providing maximum security with minimal effort.

### Cost-Effective:

Investing in the **Ram Guard Anchor** means investing in long-term security. Its re-usability and robust design offer a cost-effective solution for protecting your assets.



## WHY CHOOSE A **RAM GUARD ANCHOR**?

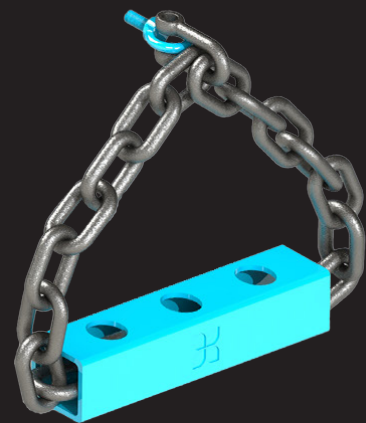
Safeguarding your devices with a visible, reliable and cost-effective solution is paramount. The **Ram Guard Anchor** provides piece of mind by reducing the chance of attacks through visual deterrence and resisting attacks through resilient design.



# Shackle Anchor

Bolt down, hold fast!

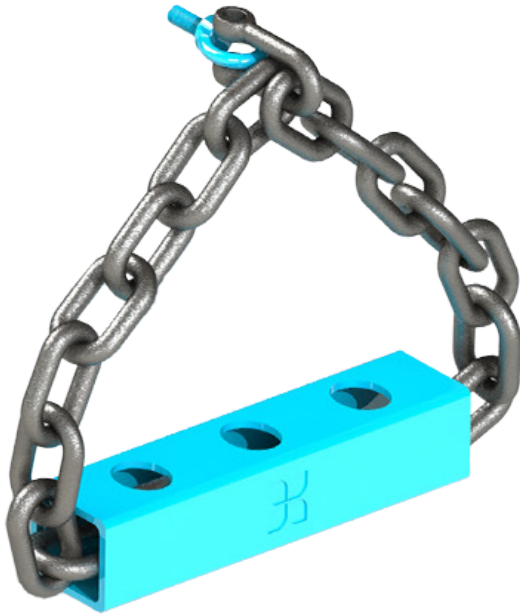
The **Shackle Anchor** from Cennox, the ultimate defence mechanism designed to secure devices in locations most vulnerable to forceful attacks and pull-outs. Crafted from steel, this robust steel bar and chain device promises uncompromising deterrence and defiance against attacks.



# Shackle Anchor

Bolt down, hold fast!

## KEY FEATURES



### Enhanced Protection:

The **Shackle Anchor** is engineered to withstand even the most aggressive attack attempts, offering reinforced security for devices in high-risk environments.

### Re-usability:

Designed for versatility, the **Shackle Anchor** can be easily reused. Whether you're replacing, moving, or upgrading your devices, this anchor provides consistent and reliable protection throughout its life-cycle.

### Effortless Installation:

While delivering formidable security, the Cennox **Shackle Anchor** features a user-friendly design that facilitates quick and straightforward installation.

### Cost-Effective Solution:

Investing in the Cennox **Shackle Anchor** means investing in long-lasting security. Its re-usability and robust construction offer a cost-effective method for fortifying your devices' defences.

## WHY CHOOSE A CENNOX SHACKLE ANCHOR?

In high-risk environments, safeguarding your ATMs with maximum security measures is essential. The **Shackle Anchor** seamlessly combines formidable protection with versatility. Its rugged design not only deters the most forceful attacks but also backs it up with the strength of its design.



# Pyramid Anchor

Bolt down, hold fast!

Introducing the **Pyramid Anchor** from Cennox, an innovative triangular security solution designed to safeguard devices at high risk sites against forceful attacks and pull-outs. Utilizing the inherent strength of the triangular shape, this powerful device is crafted from steel, offering robust defence in vulnerable locations.



# Pyramid Anchor

Bolt down, hold fast!

## KEY FEATURES

### Triangular Strength:

Leveraging the physics of the strongest geometric shape, the **Pyramid Anchor** provides exceptional resistance against brute force attacks, ensuring maximum security for your devices.

### Re-usability:

Designed for versatility and long-term use, the **Pyramid Anchor** can be easily reused. Whether you're replacing, relocating, or upgrading your devices, this anchor remains a dependable security component throughout its life-cycle.

### Efficient Installation:

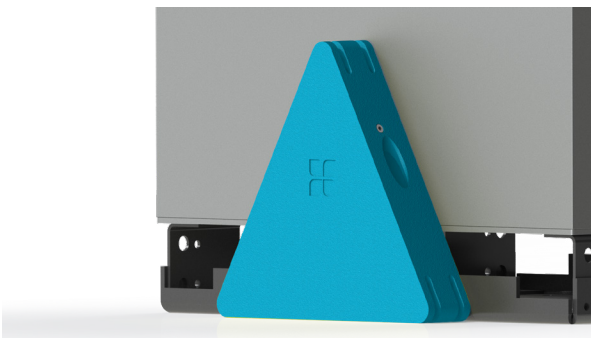
Combining strength with ease, the **Pyramid Anchor** features a straightforward installation process that allows for quick and secure attachment, with maximum impact.

### Cost-Effective Protection:

By investing in the **Pyramid Anchor**, you are choosing a reusability-focused, robust solution that offers a cost-effective approach to enhancing your security.



## WHY CHOOSE A PYRAMID ANCHOR?



For devices in the most vulnerable locations, the **Pyramid Anchor** is the pinnacle of security solutions in its category. Its unique triangular design provides superior countermeasures against brute force attacks, exploiting the strength of geometry to ensure the highest level of protection.

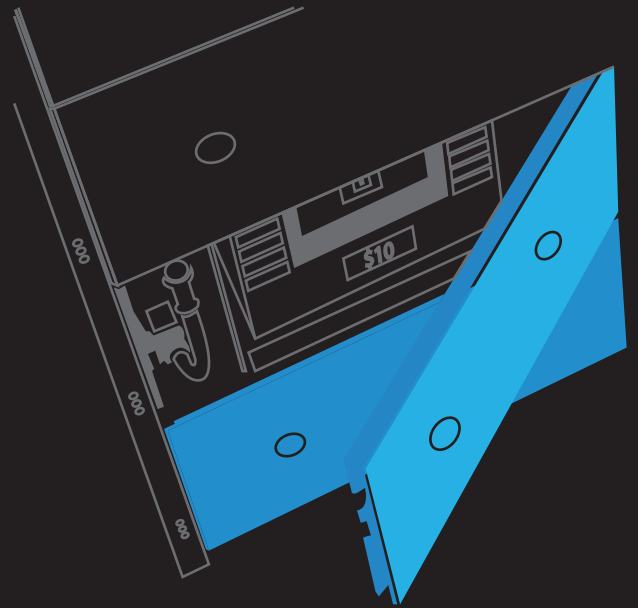




# Gryphon Locking System

Lock in, lock fast!

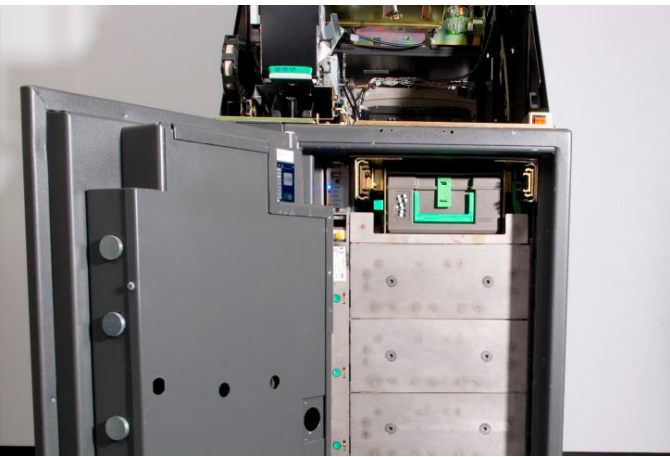
The **Gryphon Locking System** is a formidable deterrent against physical attacks on ATMs. With a sophisticated internal steel barrier to protect the cash cassettes within an ATM, the Gryphon is designed to offer a powerful and effective response to a wide range of criminal tactics. This includes armed robbery and brute force attacks, such as jaws of life, ram raids, and even explosive gas attacks.



# Gryphon Locking System

Lock in, lock fast!

## KEY FEATURES



### Electronic Lock:

Access is strictly controlled electronically, allowing only authorized personnel to handle the cash drawers, ensuring maximum security and accountability.

### Timed Lock Mechanism:

Once a drawer is closed, it remains locked until a preset time elapses, adding a crucial layer of security and preventing rapid re-entry attempts by attackers.

### Superior Construction:

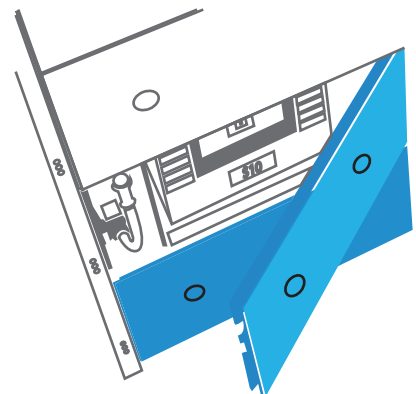
Crafted with varying grades of steel and precise engineering, the **Gryphon Locking System** provides robust protection against a wide range of threats.

### Rigorous Testing:

Our system has been extensively tested in laboratories to prove its effectiveness under various attack scenarios, ensuring reliability in real-world situations.

## WHY CHOOSE A GRYPHON LOCKING SYSTEM?

The **Gryphon Locking System** was conceived to minimize losses by ensuring only one of four cash drawers can be opened at a time, making attacks no longer cost-effective. Developed through a close partnership with clients whose CIT teams were facing increased threats from armed gangs.

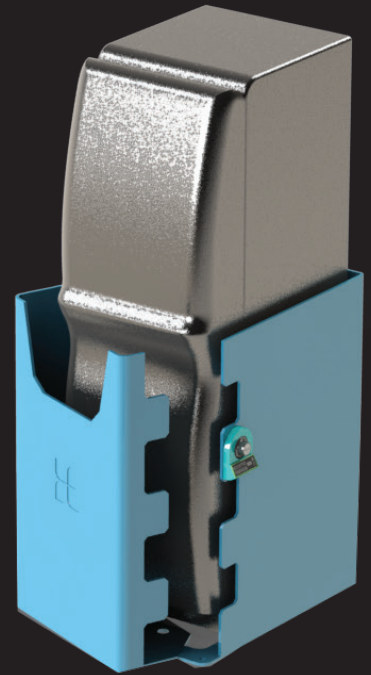




# Gryphon X Wrap

Lock in, lock fast!

Our manufactured steel exoskeleton wrap, the **Gryphon X**, helps to ensure your devices remain locked down and access to your safes securely protected. Designed and manufactured by Cennox, the **Gryphon X** is the ultimate visible deterrent for locations vulnerable to physical attack.



# Gryphon X Wrap

Lock in, lock fast!

## KEY FEATURES

### Visible Deterrent:

For sites in the most vulnerable locations, the **Gryphon X** sends a power signal to would-be criminals of the futility of attempting to tamper or steal the device.

### Superior Construction :

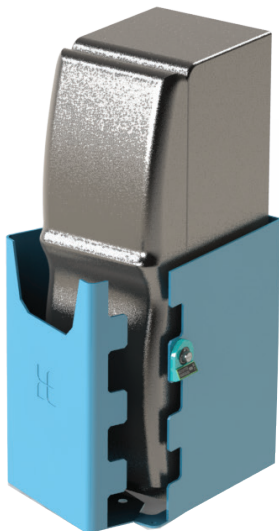
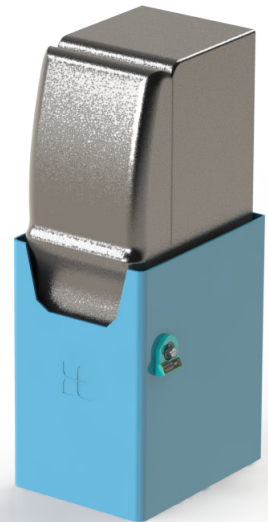
Crafted with strong steel and precisely engineered to lock around the device, the **Gryphon X** is a wraparound steel cloak providing robust protection against a wide range of threats.

### Branding Options Available:

Cennox can brand your **Gryphon X** with your corporate colours, or messaging to help make your device even more visible in store.

### Other Available Add-ons:

Add further security deterrents and devices on to ATM alongside your **Gryphon X**. From security fog, ink staining technology to cloud enabled locks to give you complete protection of your devices.



## WHY CHOOSE A **GRYPHON X WRAP**?

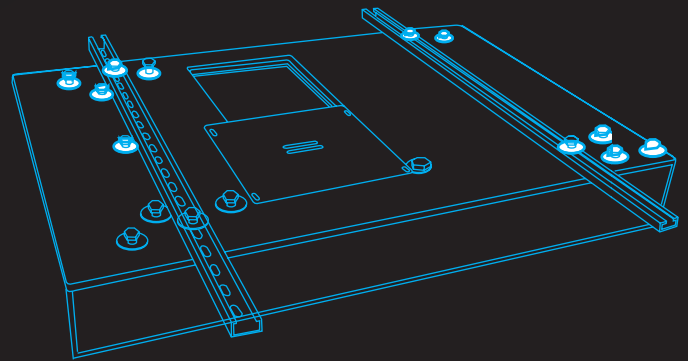
The **Gryphon X** stands out for its comprehensive approach to security, combining advanced technology, high-quality materials, and strategic design to protect your assets. Choose the **Gryphon X** for a secure and reliable solution to ATM and cash protection.



# Adjustable Plinth Base

Lock in, lock fast!

Cennox offers several different types of security bases, or plinths. These solutions provide a secure anchorage solution directly under the ATM. Additionally, these are manufactured to the correct DDA height requirement, and available for all major makes and models. Meaning that these solutions provide a visible and robust prevention of pull-out robberies.



# The **Adjustable Plinth Base**

Designed to bolt down, designed to hold fast!

## KEY FEATURES



### **Robust Construction:**

Made of high-quality steel, the **Adjustable Plinth Base** is built to withstand external forces and deter unauthorized tampering or theft. |

### **Height Adjustable:**

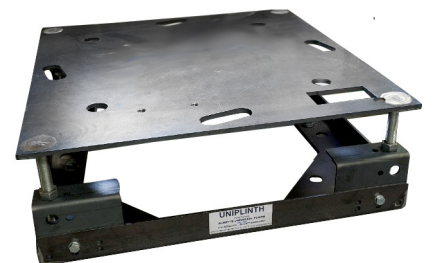
Its height-adjustable design ensures compatibility with any ATM make or model, providing flexibility in installation and maintenance.

### **Bolting Down ATMs:**

By securely bolting ATMs to the floor, the base creates a strong foundation that enhances overall security measures.

## WHY CHOOSE A CENNOX **ADJUSTABLE PLINTH BASE**?

The **Adjustable Plinth Base** offers a comprehensive and innovative solution for safeguarding financial assets and maintaining the integrity of banking services. With its advanced features, versatile design, and unparalleled reliability, the base sets a new standard for protecting ATMs in vulnerable locations.





# ATM Barrier Gate

Lock in, lock fast!

Cennox developed the **ATM Barrier Gate** to respond to the increase in physical attacks, such as ram-raids, hook-and-chain and smash-and-grabs. Our steel barrier plating stops criminals from accessing the front and the side of the ATM and allows the ATMs to be upgraded on-site to customer specifications





# ATM Barrier Gate

Lock in, lock fast!

## KEY FEATURES

### Visible Deterrent:

For sites in the most vulnerable locations, installing the **ATM Barrier Gate** sends a powerful signal to would-be criminals of the futility of attempting to tamper or steal the device.

### Superior Construction:

Crafted with strong steel and precisely engineered to stand proudly in front of the device, the **ATM Barrier Gate** provides robust protection against a wide range of ram-raid threats.

### Branding Options Available:

Cennox can brand your **ATM Barrier Gate** with your corporate colours, or messaging to help make your device even more visible.

### Other Available Add-ons:

Add further security deterrents and devices alongside your **ATM Barrier Gate**. From ATM alarms to ink staining technology to deny the prize for the criminal, giving you complete protection.



## WHY CHOOSE AN **ATM BARRIER GATE**?

The barrier's steel plating stops criminals from accessing the front side of the ATM, where it is most vulnerable. Cennox includes our one-of-a-kind unique security lock enclosure to stop criminals from cutting through the ATM Security Barrier lock. Innovations like these allow us to be at the forefront of providing our customers with the solutions required.



